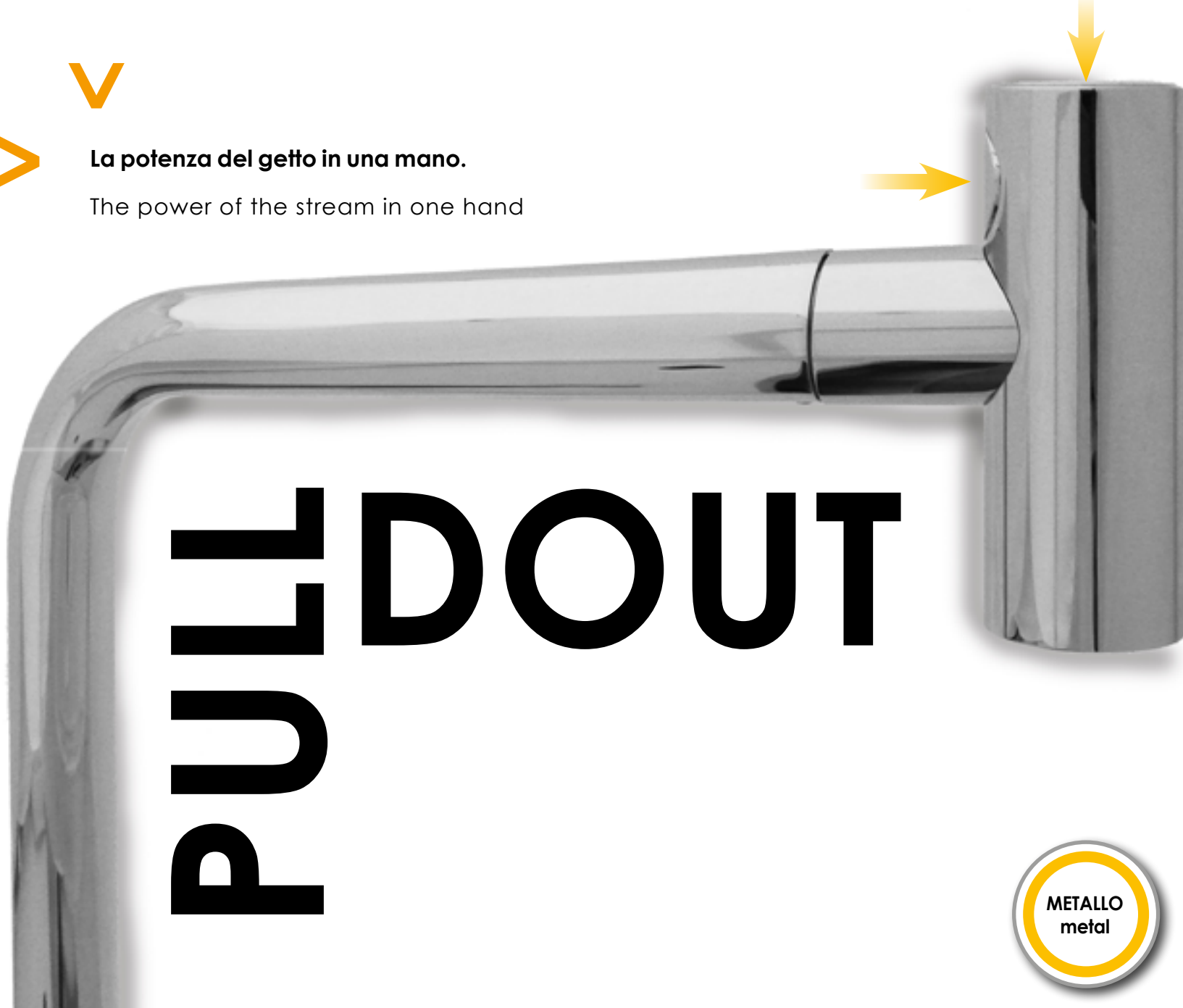




La potenza del getto in una mano.

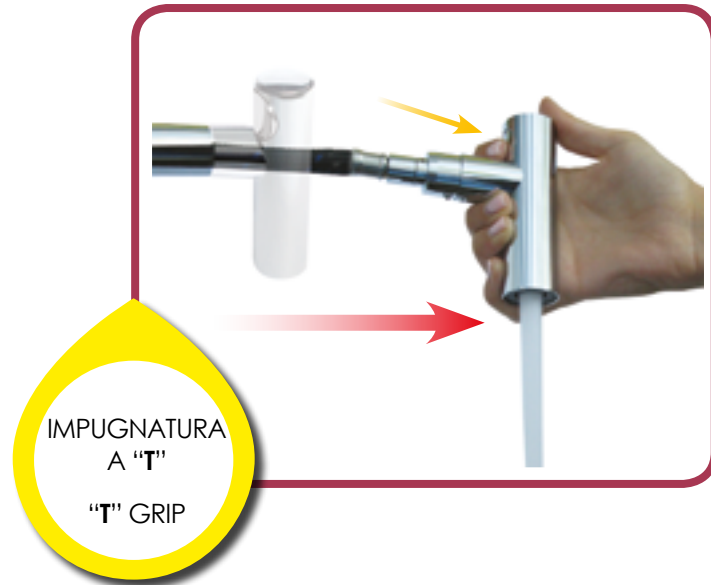
The power of the stream in one hand



PULL DOUT



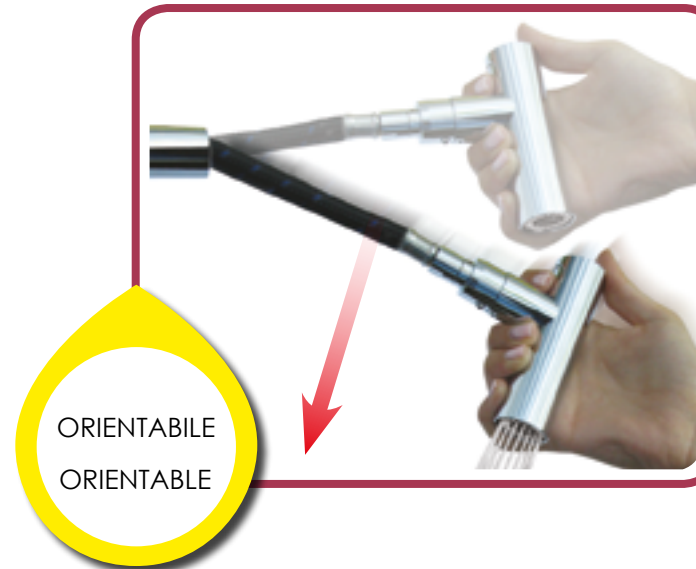
PULL DOUT



PULLDOUT LA DOCCIA IBRIDA

Lo studio accurato delle linee definisce un prodotto dal design accattivante altamente ergonomico. In qualunque posizione la si afferra, per l'utilizzo o per l'inserimento in sede, la doccia non scivola. Si impugna come una pull down ma si estrae come una pull out, ottenendo maggiore precisione e praticità durante l'utilizzo. Due pulsanti permettono di gestire i due getti dell'acqua senza staccare il palmo della mano.

- Tipologia doccia: ibrida
- Tipologia getto: doppio getto (anticalcare)
- Tipologia tasto: 2 pulsanti per la deviazione
- Corpo doccia: metallo
- Finitura: cromo
- Tipologia connessione: easy connection 15x1 femmina e M10x1 magnetico



PULLDOUT THE HYBRID SHOWER

The meticulous study of the design defines a highly ergonomic product. Any way you grab it, to use it or to put it in its place, the shower never slips away. You can hold it like a pull down but you extract it like a pull out obtaining a higher precision and a comfy use. Two buttons will let you manage two water jets without moving your hand.

- Shower type: hybrid
- Jet type: dual jet (anti limescale)
- Button type: 2 switch buttons
- Spray head body: metal
- Finishing: chrome
- Connection type: female 15x1 easy connection and M10x1 magnetic connection



PATENTED

PULL DOUT 24

MAGNETIC

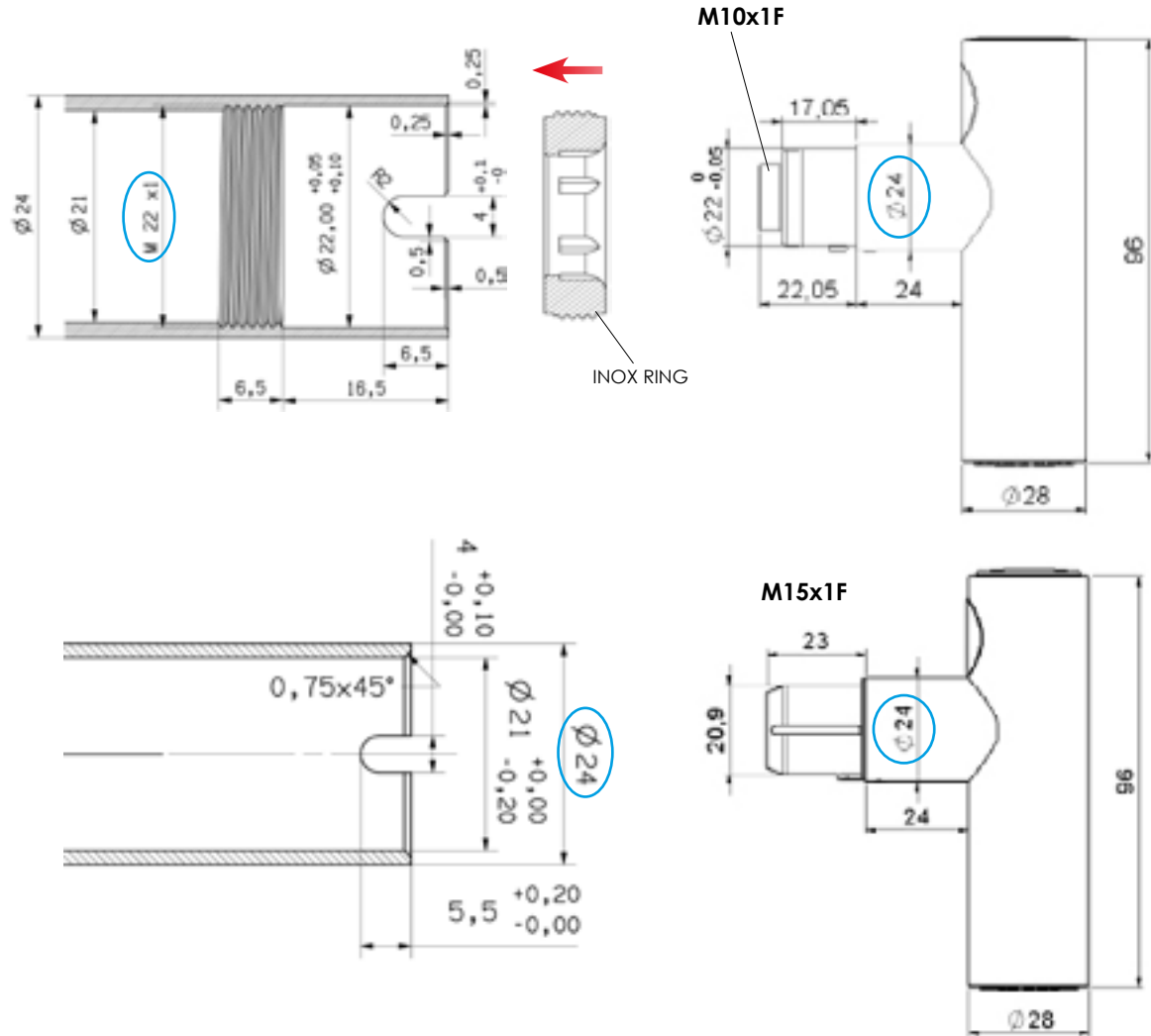


EASY CONNECTION



PRIMA DI INSERIRE L'ANELLO APPLICARE COLLA BI-COMPONENTE (AMFAG CONSIGLIA 3M DP190).

BEFORE TIGHTENING THE RING APPLY BI-COMPONENT GLUE (AMFAG SUGGESTS 3M DP190).



PULL DOUT

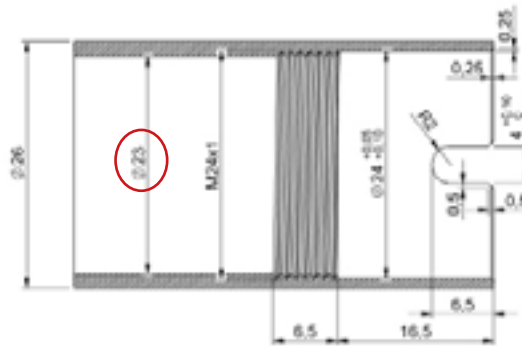
NEW

PULL DOUT 26



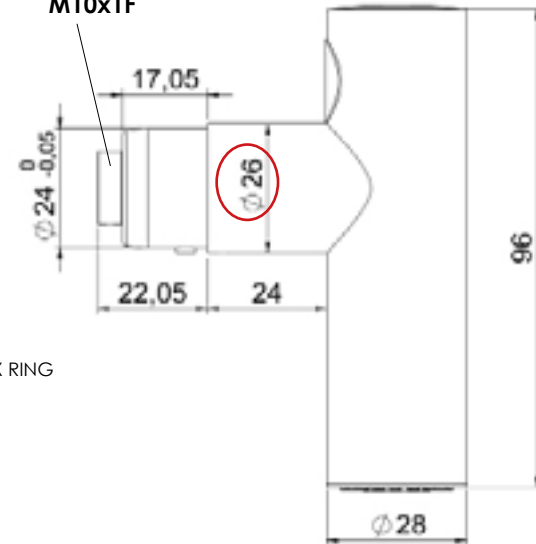
PRIMA DI INSERIRE L'ANELLO APPLICARE COLLA BI-COMPONENTE (AMFAG CONSIGLIA 3M DP190).

BEFORE TIGHTENING THE RING APPLY BI-COMPONENT GLUE (AMFAG SUGGESTS 3M DP190).

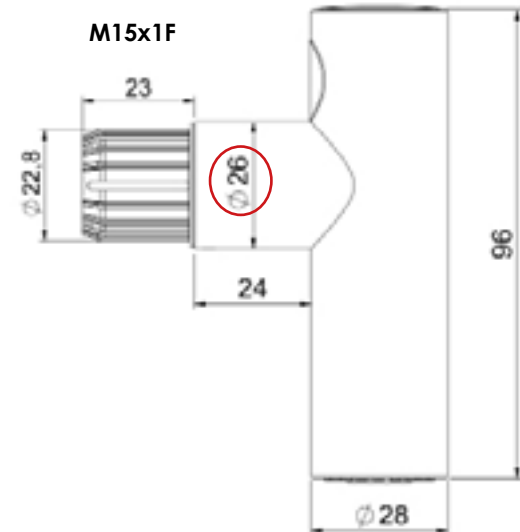


INOX RING

M10x1F



M15x1F



MAGNETIC

EASY CONNECTION