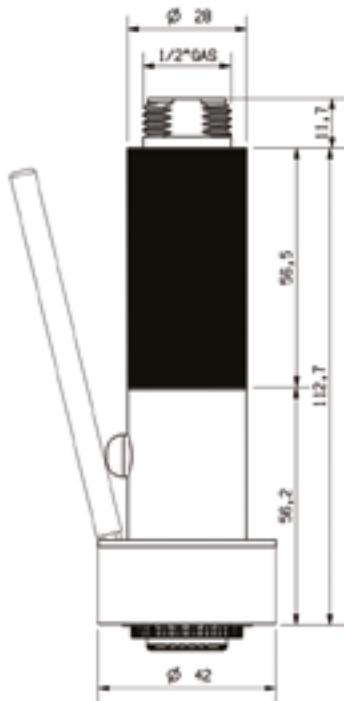
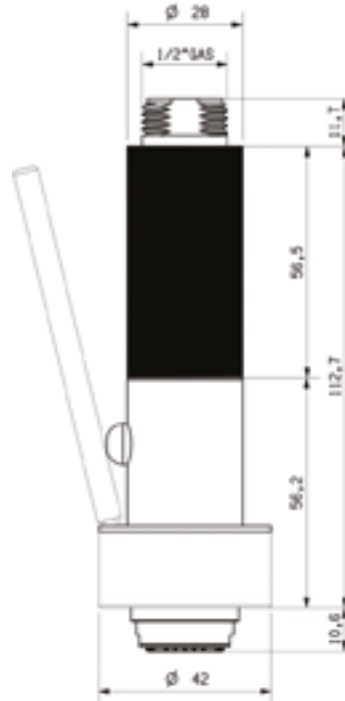


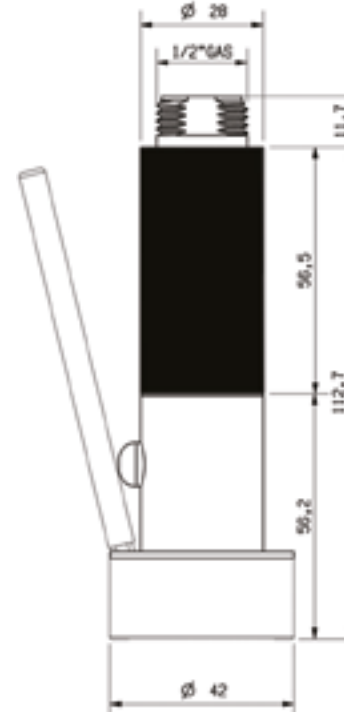
METALLO  
metal



DUAL JET



JET

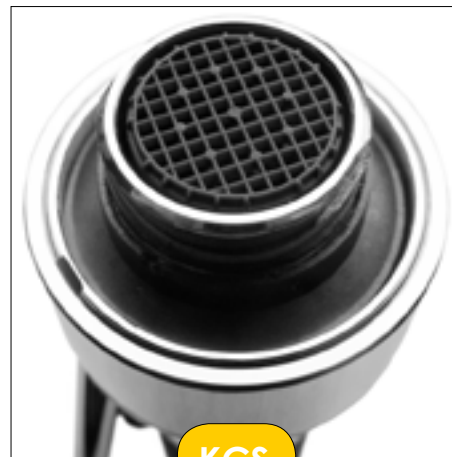


SPRAY



KCS

ECS



KCS



ECS



LE DOCCE SPRAY NON SONO PROGETTATE PER ESSERE SOTTOPOSTE AD UNA PRESSIONE CONTINUATIVA, DEVONO QUINDI ESSERE UTILIZZATE CON UNA VALVOLA A MONTE.

THE SPRAY SHOWERS ARE NOT DESIGNED TO BE SUBJECTED TO A CONTINUOUS PRESSURE, THEREFORE THEY MUST BE USED WITH A VALVE UPSTREAM.

# PROFESSIONAL SLIM



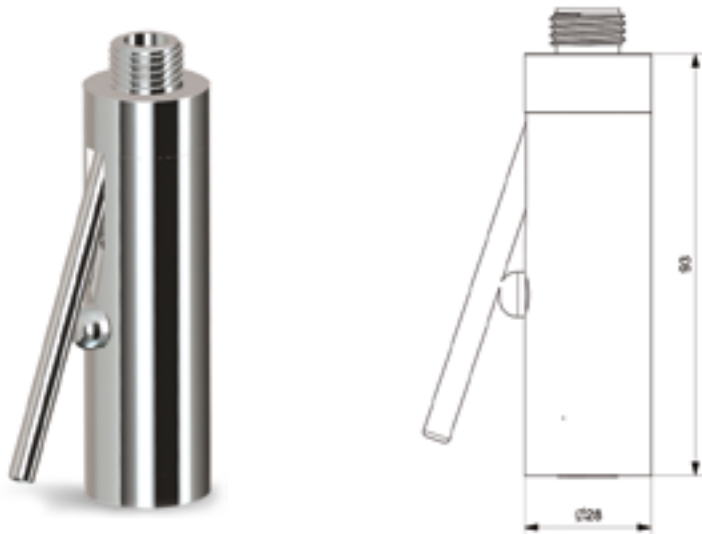
# PROFESSIONAL SLIM

## PROFESSIONAL SLIM 93

Il terminale di connessione al flessibile può essere fornito nelle seguenti configurazioni:

The terminal connection to the hose can be provided in the following configurations:

Standard		a richiesta - on request			
1/2" gas	3/8" gas	M15x1 QUICK FIX	M15x1M	M15x1F	M10x1 MAGNETIC

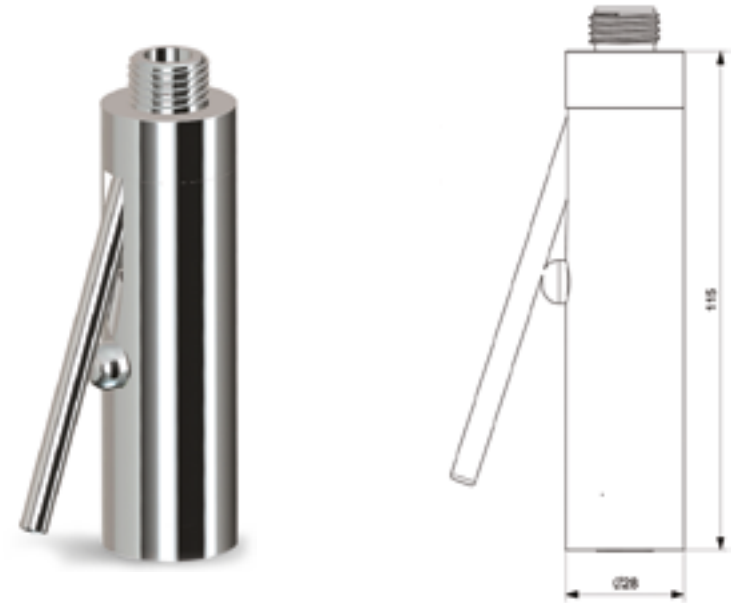


## PROFESSIONAL SLIM 115

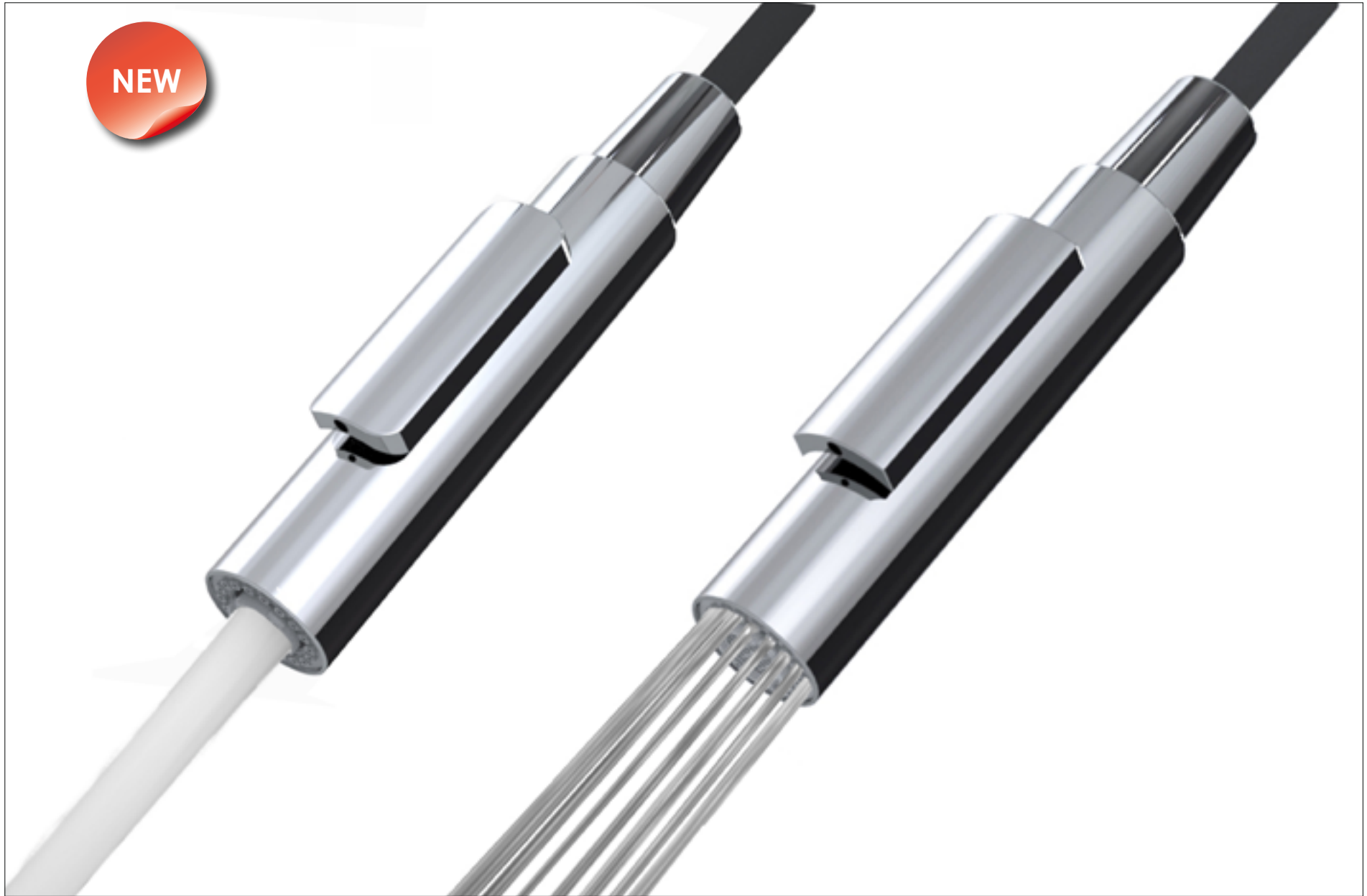
Il terminale di connessione al flessibile può essere fornito nelle seguenti configurazioni:

The terminal connection to the hose can be provided in the following configurations:

Standard		a richiesta - on request			
1/2" gas	3/8" gas	M15x1 QUICK FIX	M15x1M	M15x1F	M10x1 MAGNETIC



NEW



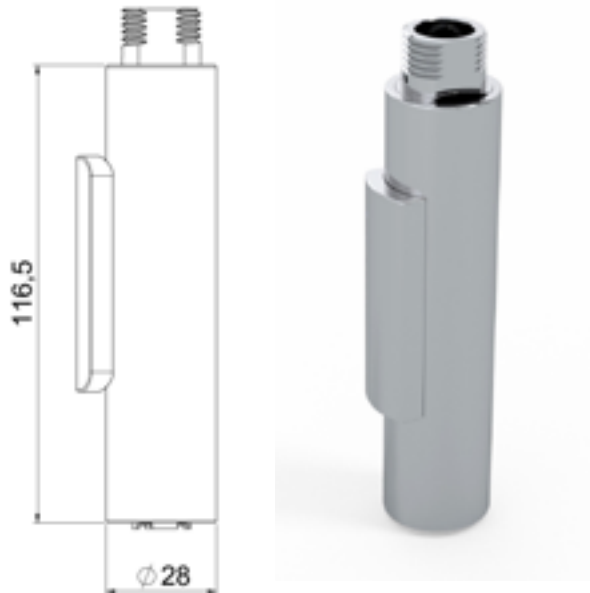
# PROFESSIONAL SLIM COMFORT

## TERMINALI - CONNECTIONS

Il terminale di connessione al flessibile può essere fornito nelle seguenti configurazioni:

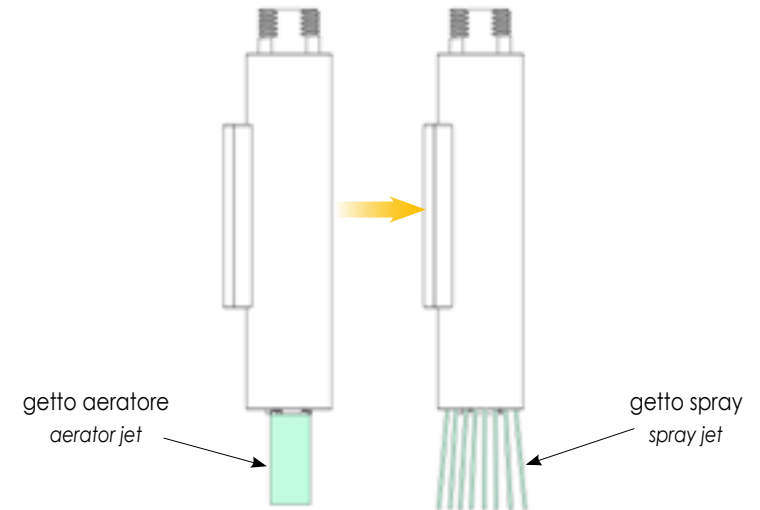
The terminal connection to the hose can be provided in the following configurations:

Standard			a richiesta - on request		
1/2" gas	3/8" gas	M10x1 MAGNETIC	M15x1M	M15x1F	M15x1 QUICK FIX



**Pulsante disponibile in due versioni**

*choice of two buttons*



**DUAL JET Manual**

**DUAL JET Automatic**

Al rilascio del pulsante, indipendentemente dalla portata, il flusso d'acqua torna sul getto aeratore

*When the button is released, regardless of the flow rate, the water flow returns to the aerator jet*

Al rilascio del pulsante il flusso d'acqua rimane sul getto-spray. Per il ritorno al getto aeratore chiudere il rubinetto.

*When the button is released the water flow remains on spray jet. To return to the aerator jet close the faucet*